

# Kennywood

## Photo Details

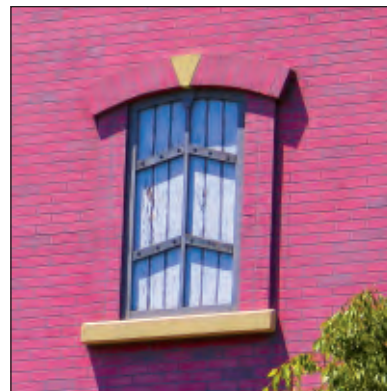
Find these photographic details when you visit Kennywood Park. Write the location of each on the line under each photograph. See your teacher or group leader to check your answers.



A



B



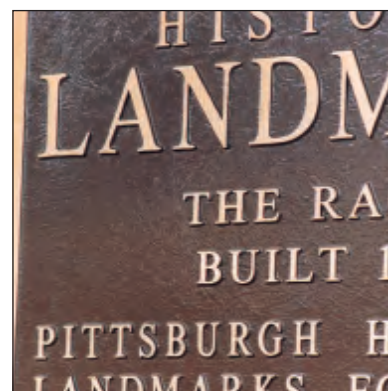
C



D



E



F

Student Name \_\_\_\_\_

School Name \_\_\_\_\_

Created in 2006 with funding support from The Grable Foundation; updated April, 2010

**PH** PITTSBURGH HISTORY & LANDMARKS FOUNDATION  
*LP* Protecting the Places that Make Pittsburgh Home

100 West Station Square Drive, Suite 450 • Pittsburgh, PA 15219-1134 • Phone 412-471-5808 • Fax 412-471-1633 • www.phlf.org

# Kennywood Photo Details

Find these photographic details when you visit Kennywood Park. Write the location of each on the line under each photograph. See your teacher or group leader to check your answers.



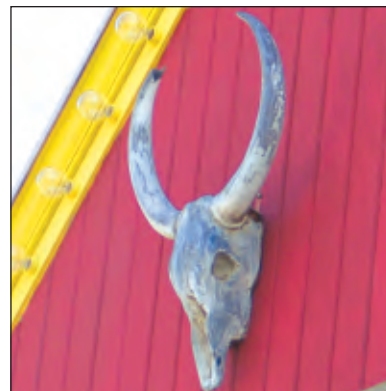
\_\_\_\_\_

A



\_\_\_\_\_

B



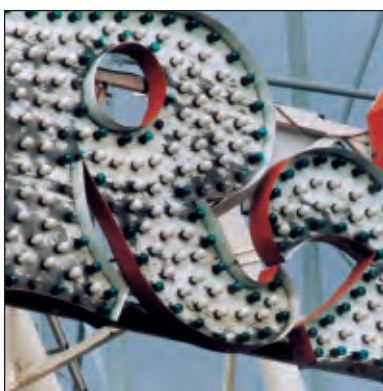
\_\_\_\_\_

C



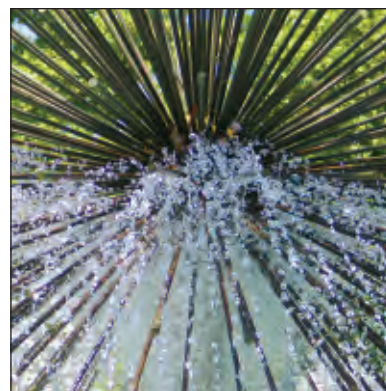
\_\_\_\_\_

D



\_\_\_\_\_

E



\_\_\_\_\_

F

\_\_\_\_\_

Student Name

\_\_\_\_\_

School Name

Created in 2006 with funding support from The Grable Foundation; updated April, 2010

**PH** PITTSBURGH HISTORY & LANDMARKS FOUNDATION  
*LP* Protecting the Places that Make Pittsburgh Home

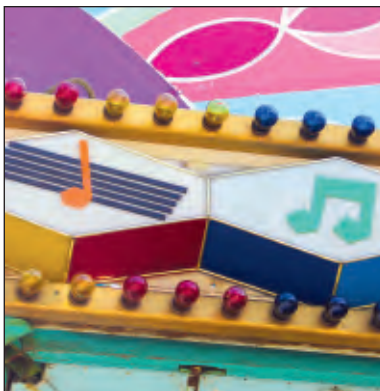
100 West Station Square Drive, Suite 450 • Pittsburgh, PA 15219-1134 • Phone 412-471-5808 • Fax 412-471-1633 • www.phlf.org

# Kennywood Photo Details

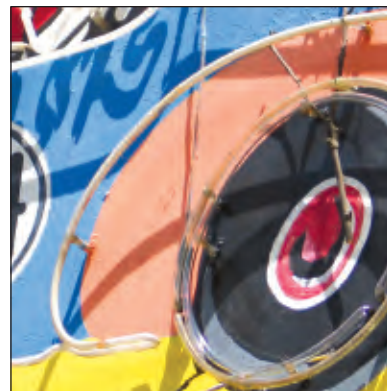
Find these photographic details when you visit Kennywood Park. Write the location of each on the line under each photograph. See your teacher or group leader to check your answers.



A



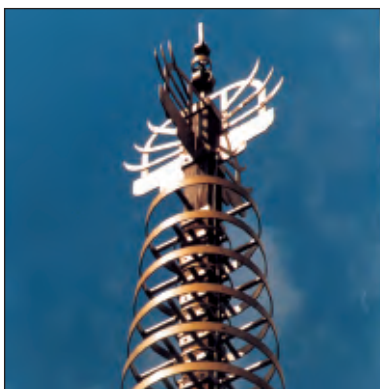
B



C



D



E



F

Student Name \_\_\_\_\_

School Name \_\_\_\_\_

Created in 2006 with funding support from The Grable Foundation; updated April, 2010

**PH** PITTSBURGH HISTORY & LANDMARKS FOUNDATION  
*LP* Protecting the Places that Make Pittsburgh Home

100 West Station Square Drive, Suite 450 • Pittsburgh, PA 15219-1134 • Phone 412-471-5808 • Fax 412-471-1633 • www.phlf.org

# Kennywood Photo Details

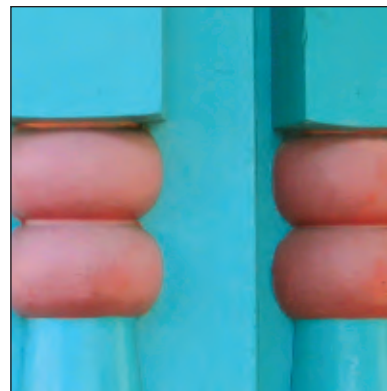
Find these photographic details when you visit Kennywood Park. Write the location of each on the line under each photograph. See your teacher or group leader to check your answers.



A



B



C



D



E



F

Student Name \_\_\_\_\_

School Name \_\_\_\_\_

Created in 2006 with funding support from The Grable Foundation; updated April, 2010

**PH** PITTSBURGH HISTORY & LANDMARKS FOUNDATION  
*Protecting the Places that Make Pittsburgh Home*

100 West Station Square Drive, Suite 450 • Pittsburgh, PA 15219-1134 • Phone 412-471-5808 • Fax 412-471-1633 • www.phlf.org

# Kennywood Photo Details

Find these photographic details when you visit Kennywood Park. Write the location of each on the line under each photograph. See your teacher or group leader to check your answers.



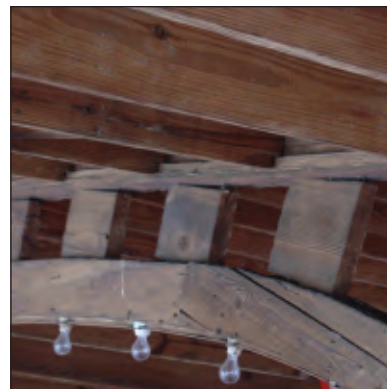
\_\_\_\_\_

A



\_\_\_\_\_

B



\_\_\_\_\_

C



\_\_\_\_\_

D



\_\_\_\_\_

E



\_\_\_\_\_

F

\_\_\_\_\_

Student Name

\_\_\_\_\_

School Name

Created in 2006 with funding support from The Grable Foundation; updated April, 2010

**PH** PITTSBURGH HISTORY & LANDMARKS FOUNDATION  
*LP* Protecting the Places that Make Pittsburgh Home

100 West Station Square Drive, Suite 450 • Pittsburgh, PA 15219-1134 • Phone 412-471-5808 • Fax 412-471-1633 • www.phlf.org

# Kennywood Photo Details

Find these photographic details when you visit Kennywood Park. Write the location of each on the line under each photograph. See your teacher or group leader to check your answers.



\_\_\_\_\_

A



\_\_\_\_\_

B



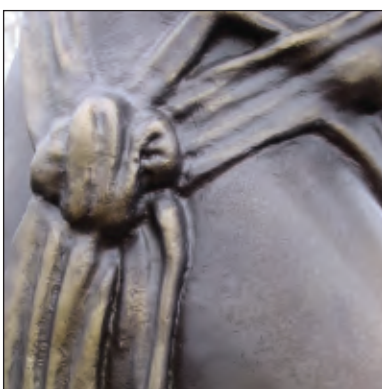
\_\_\_\_\_

C



\_\_\_\_\_

D



\_\_\_\_\_

E



\_\_\_\_\_

F

\_\_\_\_\_

Student Name

\_\_\_\_\_

School Name

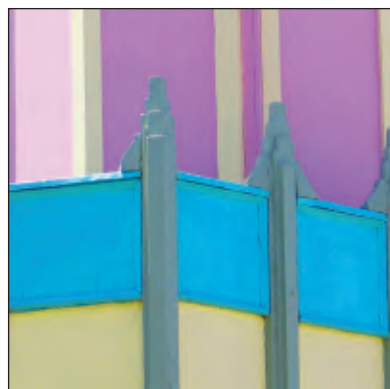
Created in 2006 with funding support from The Grable Foundation; updated April, 2010

**PH** PITTSBURGH HISTORY & LANDMARKS FOUNDATION  
*LP* Protecting the Places that Make Pittsburgh Home

100 West Station Square Drive, Suite 450 • Pittsburgh, PA 15219-1134 • Phone 412-471-5808 • Fax 412-471-1633 • www.phlf.org

# Kennywood Photo Details

Find these photographic details when you visit Kennywood Park. Write the location of each on the line under each photograph. See your teacher or group leader to check your answers.



A



B



C



D



E



F

Student Name \_\_\_\_\_

School Name \_\_\_\_\_

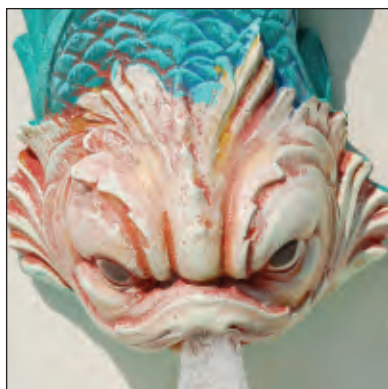
Created in 2006 with funding support from The Grable Foundation; updated April, 2010

**PH** PITTSBURGH HISTORY & LANDMARKS FOUNDATION  
*LP* Protecting the Places that Make Pittsburgh Home

100 West Station Square Drive, Suite 450 • Pittsburgh, PA 15219-1134 • Phone 412-471-5808 • Fax 412-471-1633 • www.phlf.org

# Kennywood Photo Details

Find these photographic details when you visit Kennywood Park. Write the location of each on the line under each photograph. See your teacher or group leader to check your answers.



\_\_\_\_\_

A



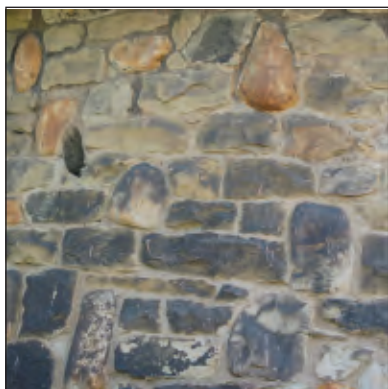
\_\_\_\_\_

B



\_\_\_\_\_

C



\_\_\_\_\_

D



\_\_\_\_\_

E



\_\_\_\_\_

F

\_\_\_\_\_

Student Name

\_\_\_\_\_

School Name

Created in 2006 with funding support from The Grable Foundation; updated April, 2010

**PH** PITTSBURGH HISTORY & LANDMARKS FOUNDATION  
*LP* Protecting the Places that Make Pittsburgh Home

100 West Station Square Drive, Suite 450 • Pittsburgh, PA 15219-1134 • Phone 412-471-5808 • Fax 412-471-1633 • www.phlf.org



## Photo Detail Answer Sheet

Note: Although we try to keep the photo details current, some details are painted new colors and some change as a result of remodeling. So, if you can't find a few of these details it might be because they have changed beyond recognition or are not there anymore. Updated May 30, 2007.

### Sheet 1

- 1A. The Pasttime Building (tallest building in between the Racer and the Jack Rabbit)
- 1B. Kandy Kaleidoscope Pavilion near entrance
- 1C. Exterminator building façade and window
- 1D. Roll-a-ball seat
- 1E. Bayern Kurve
- 1F. Historic Landmark plaque at the Racer

### Sheet 2

- 2A. Carousel
- 2B. Side of Noah's Ark
- 2C. Shooting Gallery
- 2D. Entrance gate to Kiddie Land
- 2E. Two letters from the Pirate Ship
- 2F. Fountain by landscaped clock

### Sheet 3

- 3A. Major building in Lost Kennywood, between the Bear Factory and Small Fry's
- 3B. Musik Express
- 3C. Sign/picture at Auto Race
- 3D. Buttons on toy soldier's jacket at entrance to Kiddie Land
- 3E. Chinese Pagoda
- 3F. Lattice work of the Racer

### Sheet 4

- 4A. "The Cottage" (classic railing of the women's restroom, near the Bottle Game)
- 4B. Painting of the train scenery for the Olde Kennywood Railroad
- 4C. Big Dipper detail
- 4D. Pennsylvania Dutch symbol at the Bottle Game
- 4E. Kandy Kaleidoscope near the entrance to Kennywood
- 4F. Carousel Food Court Pavilion

### Sheet 5

- 5A. Musik Express
- 5B. The Pasttime Building (detail of tall building with Kennywood sign and clock)
- 5C. Interior ceiling of the Racer
- 5D. Food stand near Log Jammer
- 5E. Aero 360 ride
- 5F. Chinese Pagoda sign

### Sheet 6

- 6A. Chinese Pagoda
- 6B. Parkside Café railing
- 6C. Mushroom-shaped water fountain near Parkside Café
- 6D. Refreshment popcorn stand
- 6E. George Washington statue
- 6F. Aqua Race Pavilion

### Sheet 7

- 7A. "The Lucky" (Corn Dog stand)
- 7B. Clock at Olde Kennywood Train Station
- 7C. French & Indian 250th Anniversary Plaque (near Shooting Gallery)
- 7D. Chinese Pagoda
- 7E. Turtle ride sign near the Potato Patch
- 7F. Thunderbolt roller coaster sign

### Sheet 8

- 8A. Fish on Lost Kennywood fountain
- 8B. Grand Prix
- 8C. Wooden upright for the Pittsburg Plunge
- 8D. Windmill
- 8E. Window and dormer of Old Mill
- 8F. Food Pavilion in Lost Kennywood near the Pitt Fall

Created in 2006 with funding support from The Grable Foundation; updated April, 2010



PITTSBURGH HISTORY & LANDMARKS FOUNDATION  
*Protecting the Places that Make Pittsburgh Home*

100 West Station Square Drive, Suite 450 • Pittsburgh, PA 15219-1134 • Phone 412-471-5808 • Fax 412-471-1633 • www.phlf.org